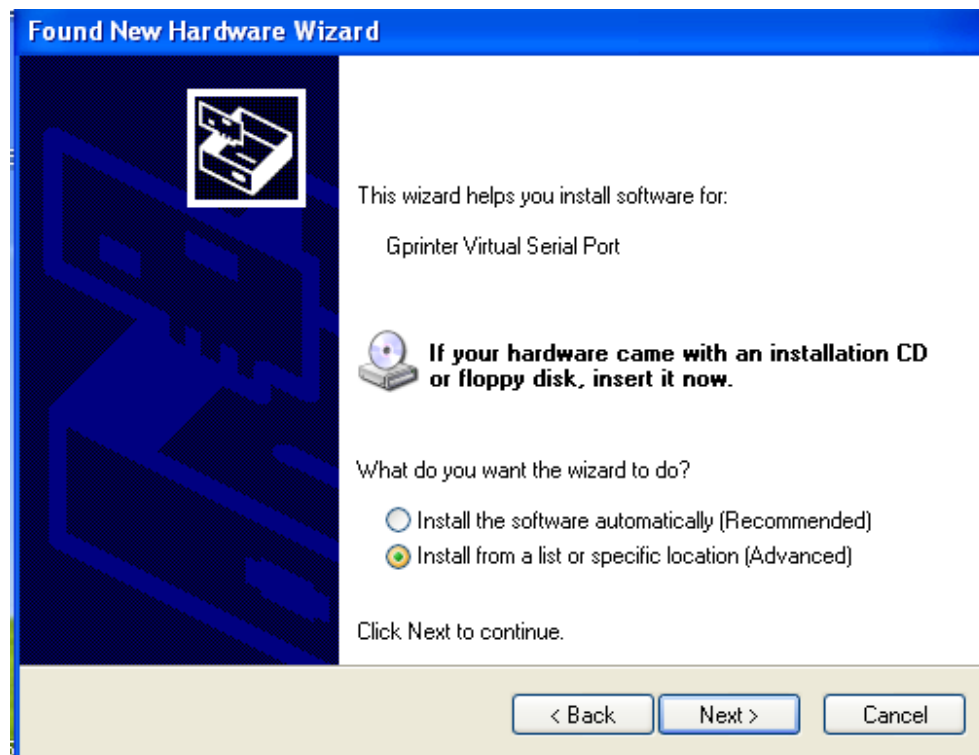
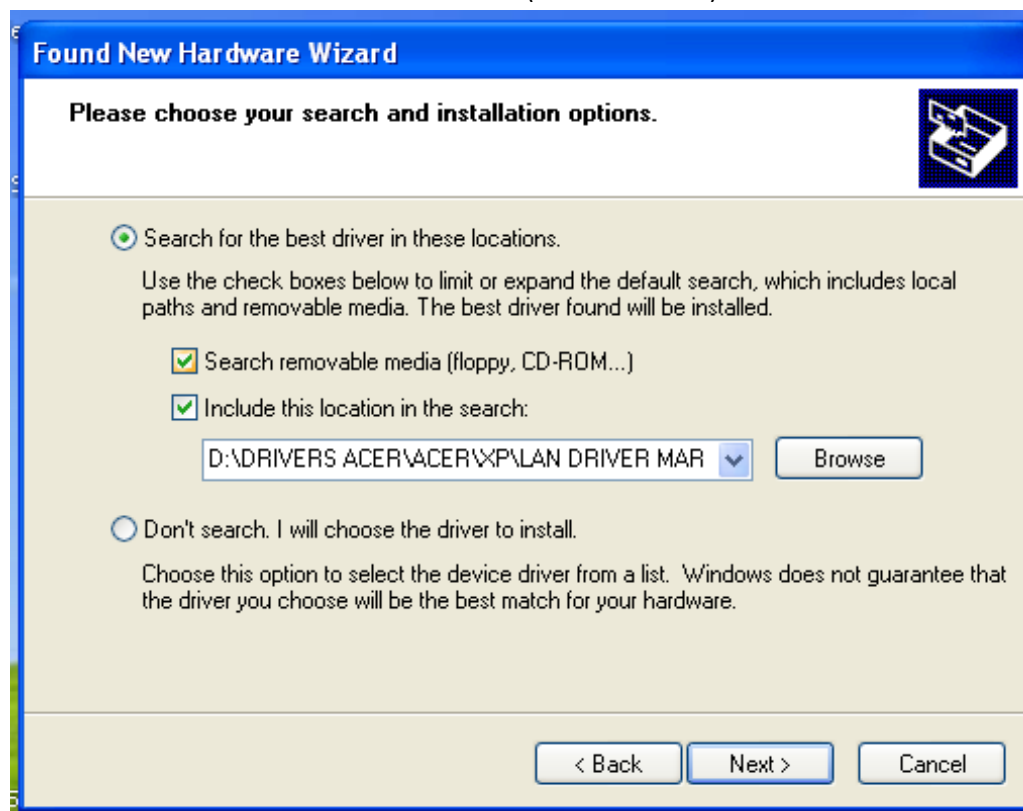


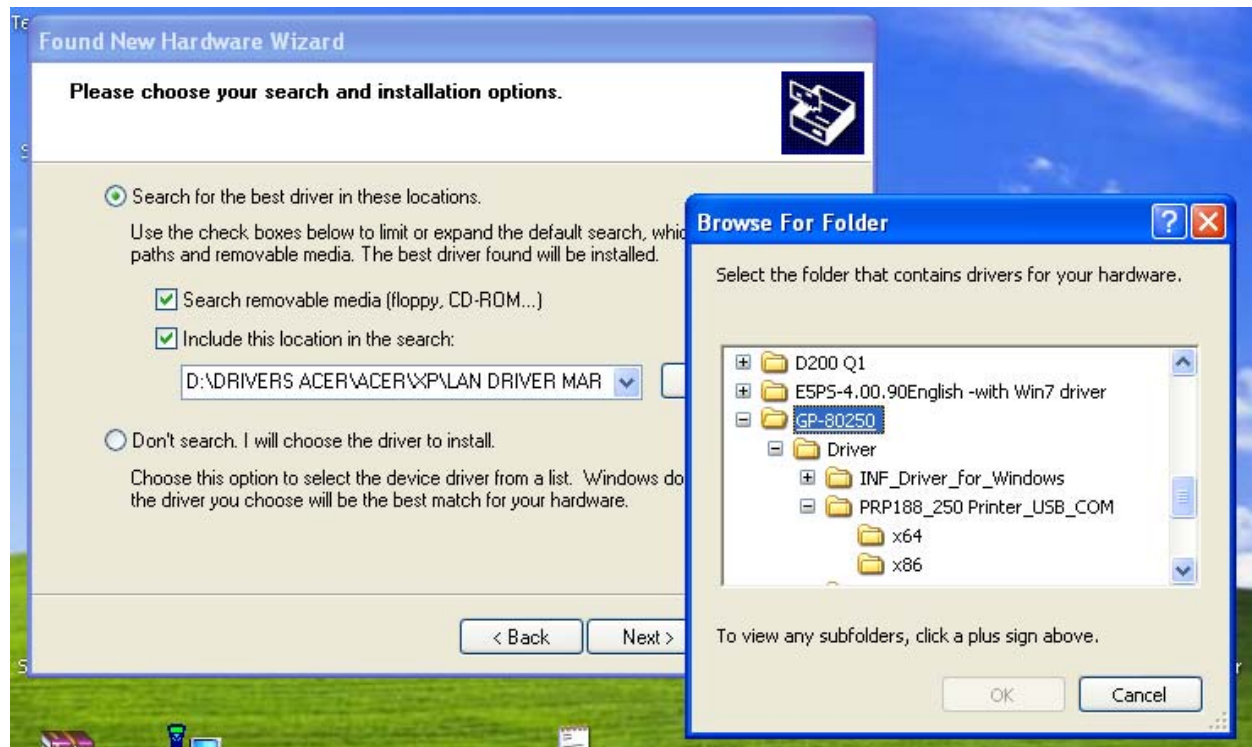


Click Next

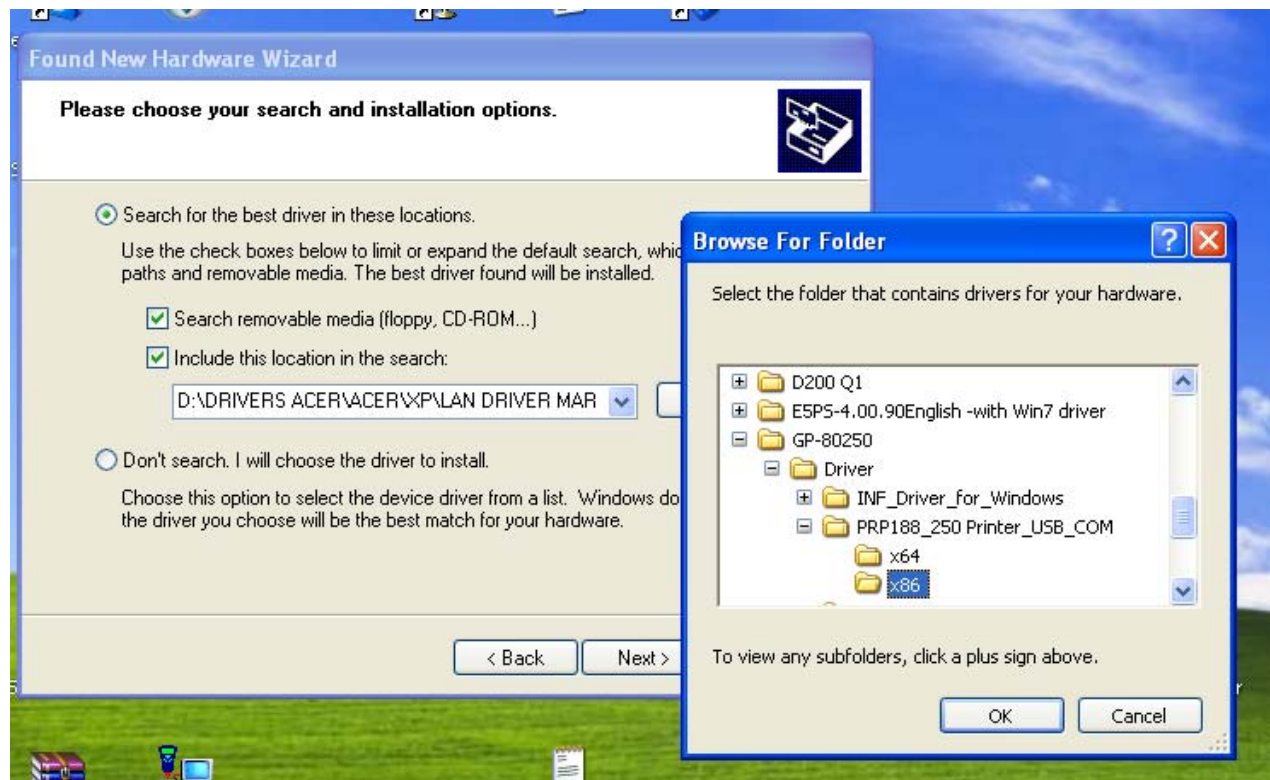


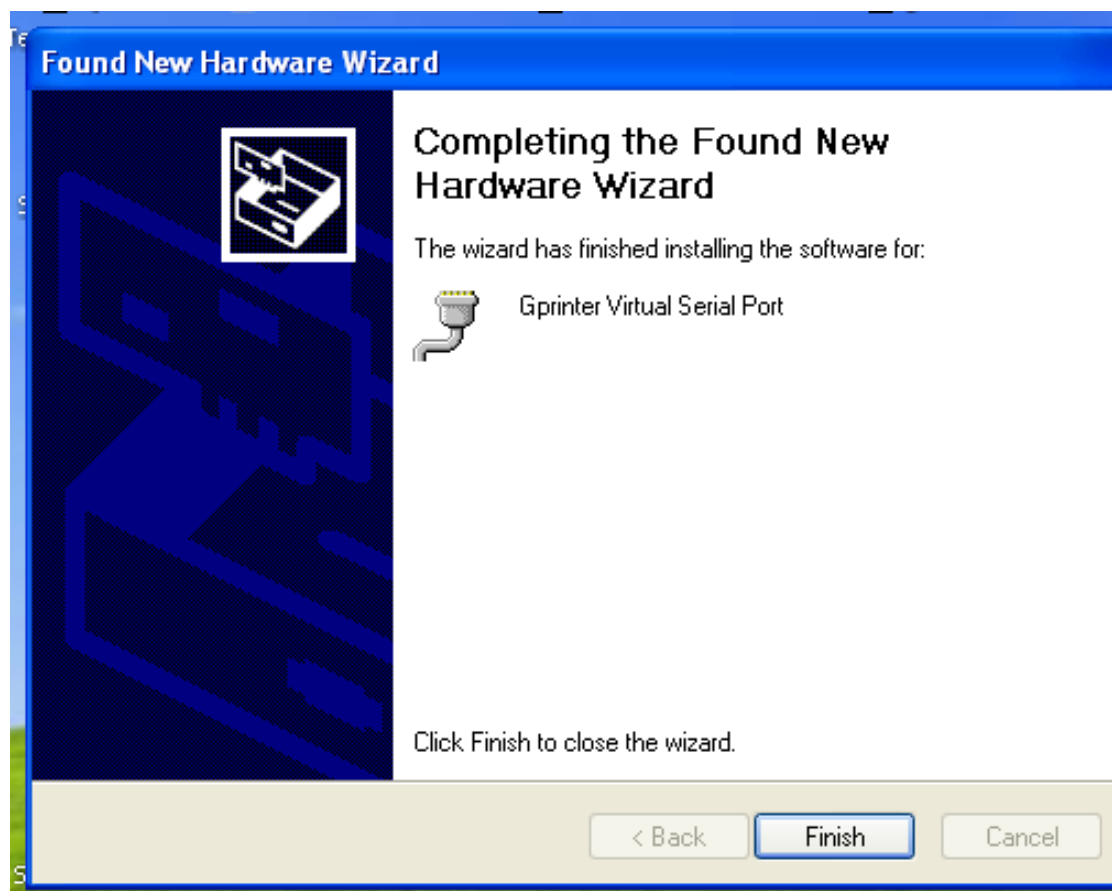
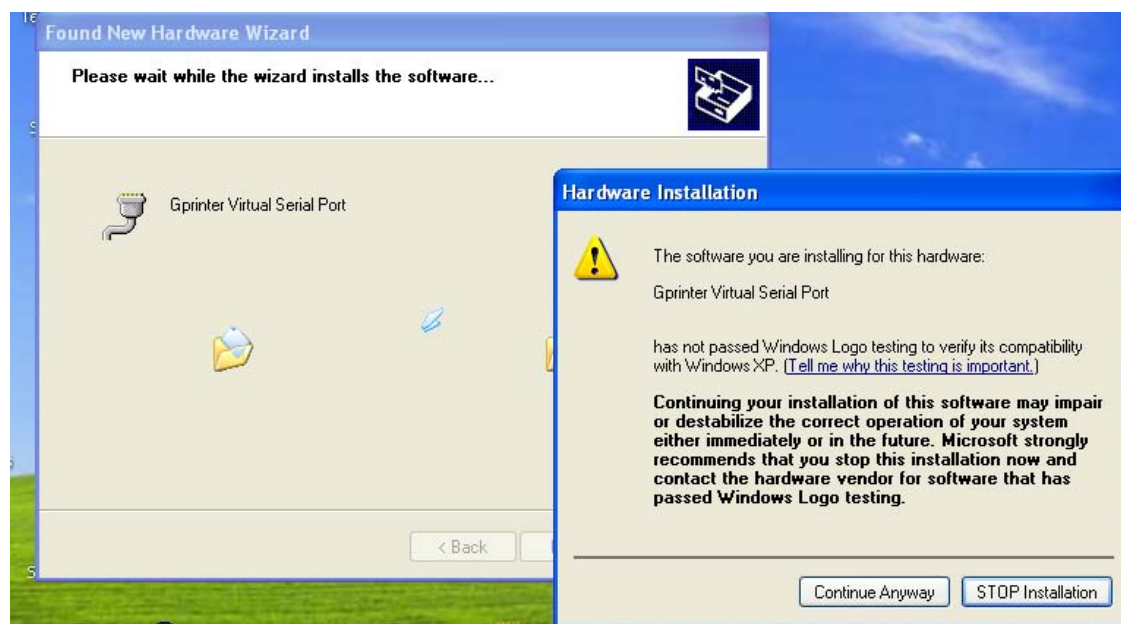
Select Browse Button to select the location (Select cd Drive)





In Cd Select folder according to the following pictures







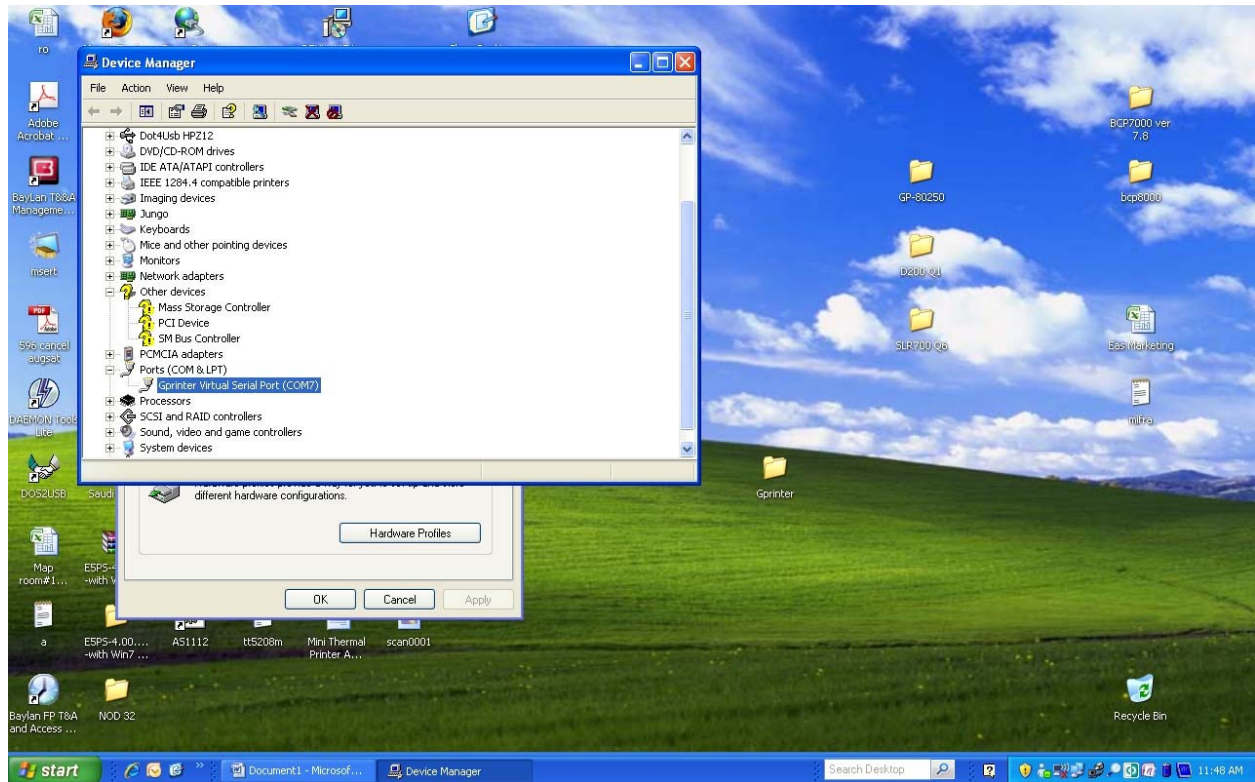
After this installation follow the below steps



Select TAB Hardware, the click Device Manager



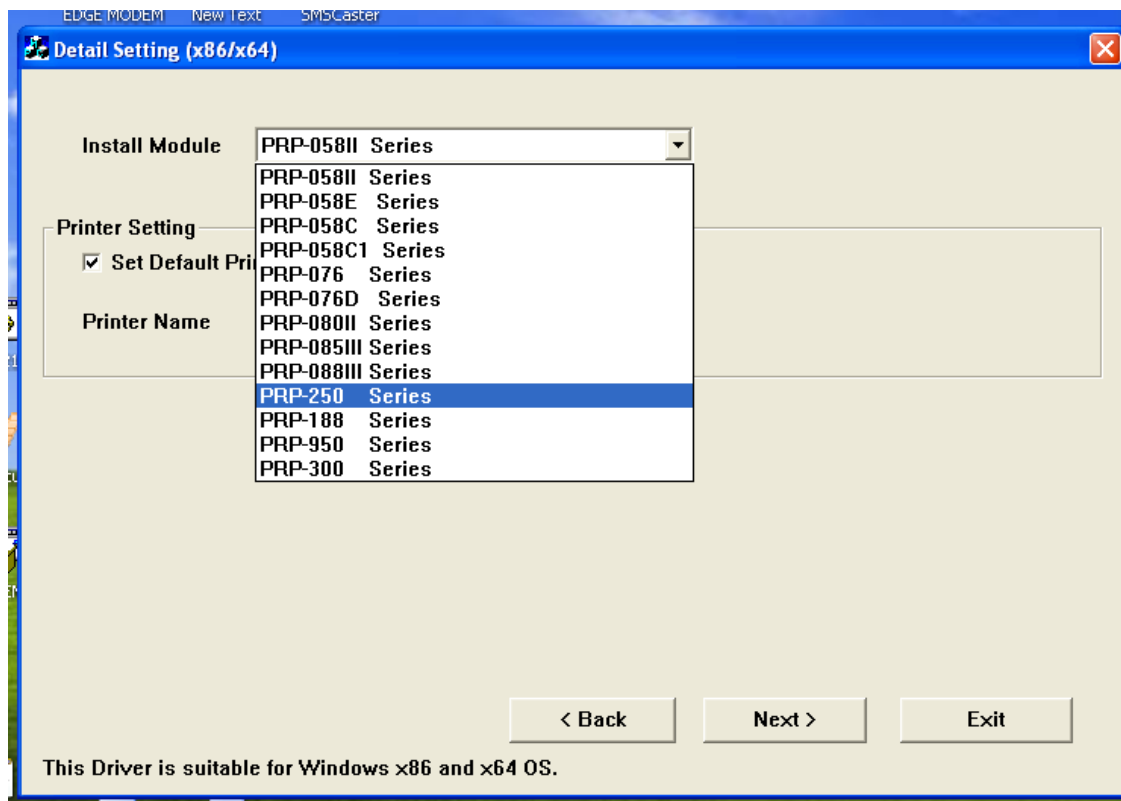
Check which port the USB Driver Picks.

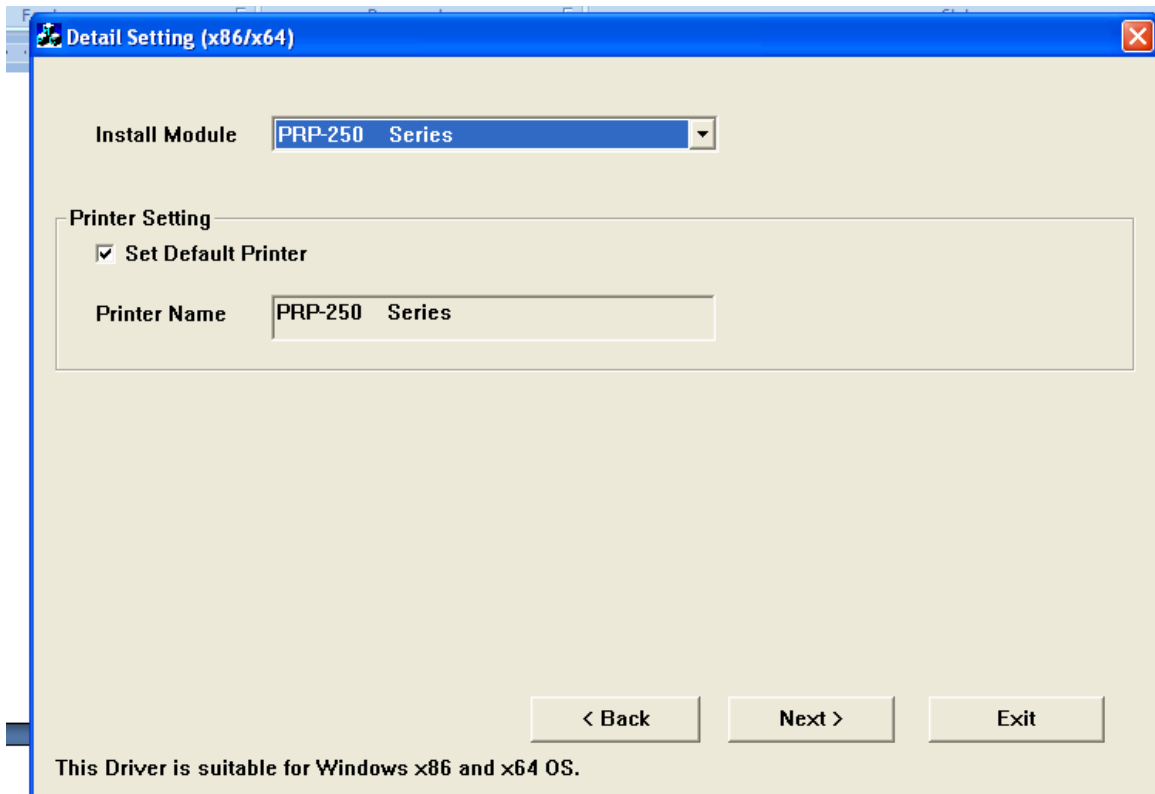


Then open the following folder in CD >Driver> Win2000\_XP\_Vista\_7\_x32x64

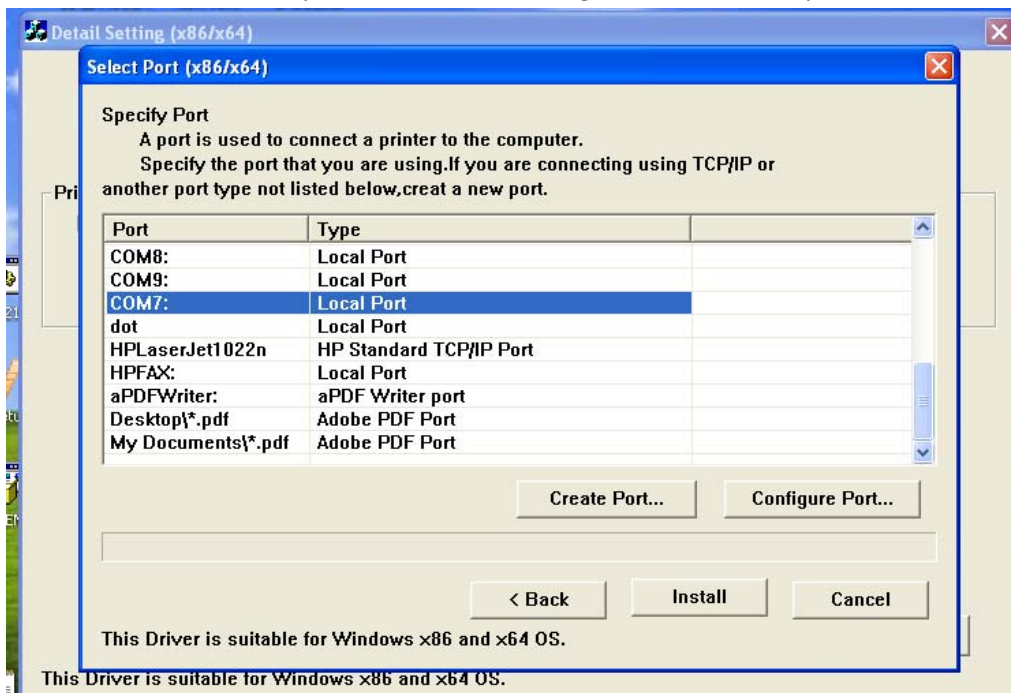
Then run the Setup file name: PRPDRVEN V8





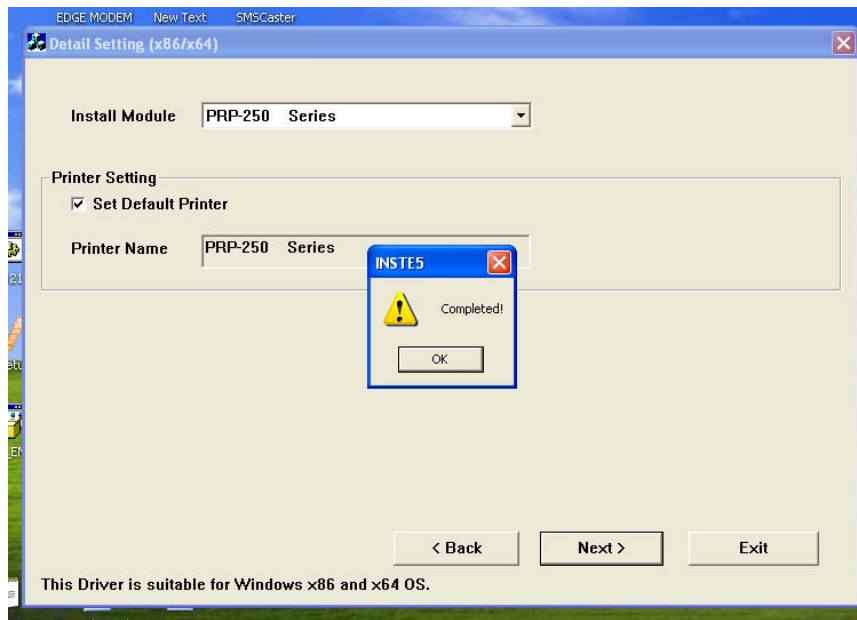


Select the Com Port that you see in device manager that usb driver pick

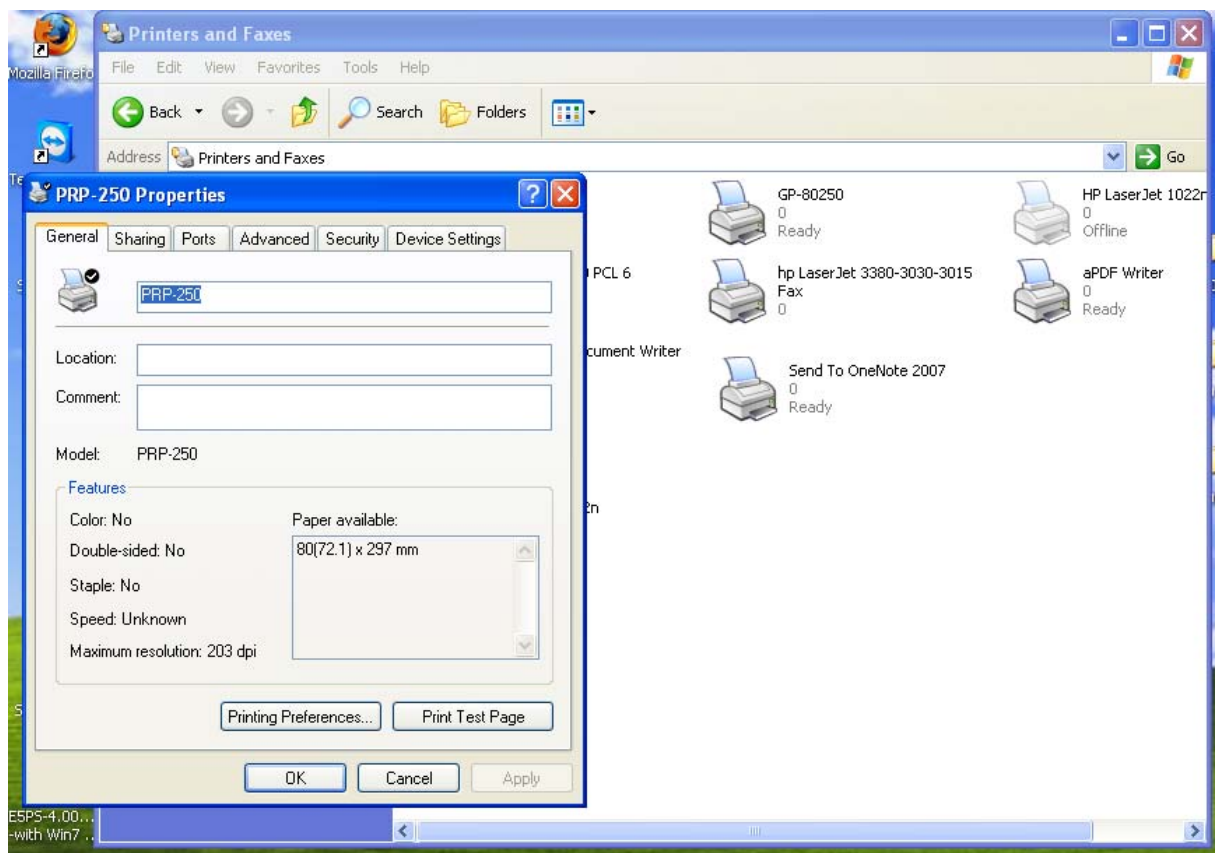


Then Click Install

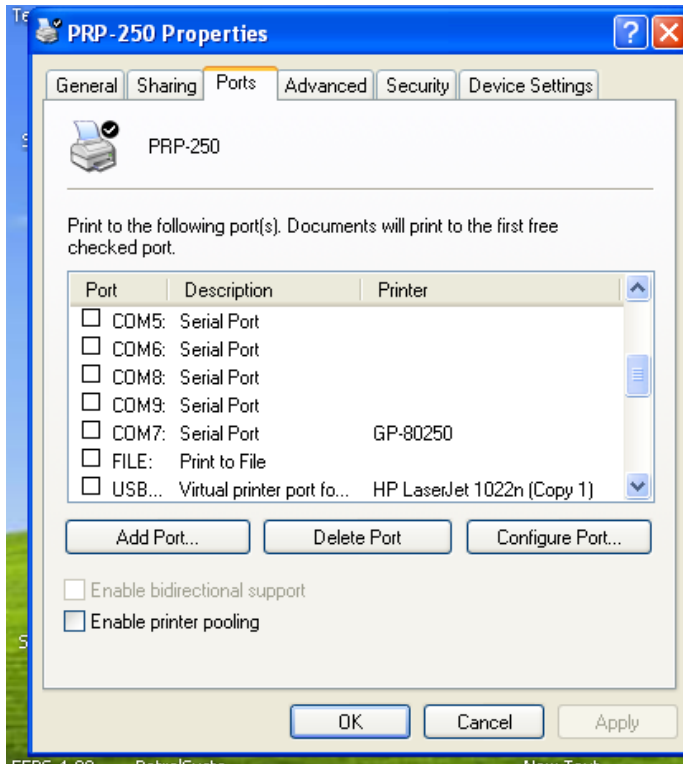




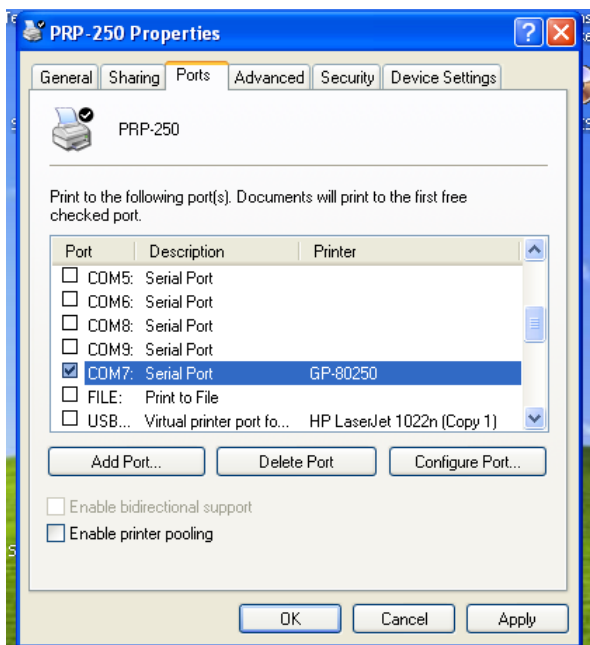
Then go to Control Panel > Printers and Faxes > Right Clickon the printer PRP-250 > Select Properties



Then Select TAB "Ports"



Select the COM Port that software picks in device manager



Then click APPLY.

Then Click TAB “General” there click print test page button, the printer prints the windows test print.

Installation Complete.